

NATURE CANADA'S MISSION:

Together we protect nature, its diversity, and the processes that sustain it.

Nature Canada
85 Albert St., Suite 900
Ottawa, ON K1P 6A4
1-800-267-4088

Download this brochure and others like it at www.naturecanada.ca, or contact us for more information at info@naturecanada.ca.



Your Hands-on Guide to Plants and Climate Change

Citizen Scientists Unite!

Join our PlantWatch Program



The PlantWatch Program is your opportunity to become a citizen scientist and help us learn more about the effects of climate change! By submitting simple yet vital observations about the blooming dates of certain plant species in your area, you can help scientists discover how and why our natural environment is changing.

Because the spring flowering of perennial plants occurs largely in response to the amount of warmth they are exposed to, earlier flowering occurs after warmer winters, and later flowering occurs after colder winters. People of all ages can participate in PlantWatch. It's easy – and you can help solve one of the most pressing problems facing our society today.

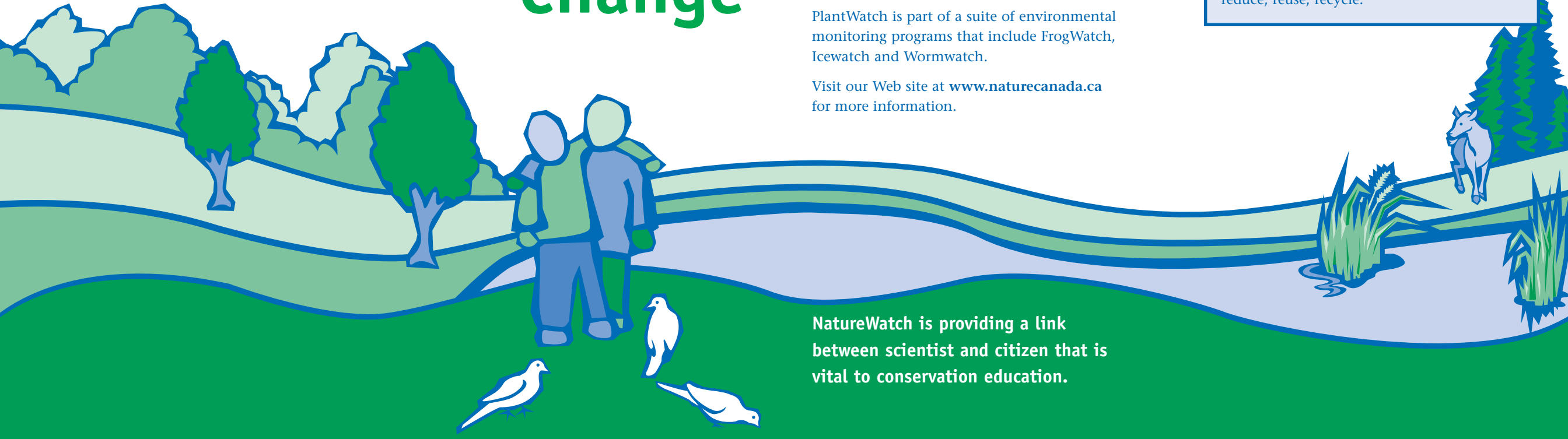
PlantWatch is part of a suite of environmental monitoring programs that include FrogWatch, Icewatch and Wormwatch.

Visit our Web site at www.naturecanada.ca for more information.

SIMPLE WAYS TO REDUCE GREENHOUSE GAS EMISSIONS AND SLOW CLIMATE CHANGE

ON THE ROAD: reduce the amount you drive; walk, bike, carpool and use public transit more often; don't idle your vehicle; keep your vehicle properly tuned and tires properly inflated; consider fuel efficiency when buying a vehicle.

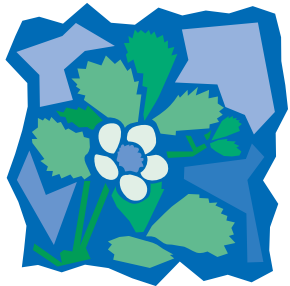
AT HOME: buy energy efficient appliances; shut off lights and equipment when not in use; use fluorescent bulbs, lower your thermostat and water heater temperature; insulate and weatherproof your home; conserve water; hang laundry; plant trees; reduce, reuse, recycle.



NatureWatch is providing a link between scientist and citizen that is vital to conservation education.

Your Observation Guide for PlantWatch Species

These three plants are good climate change indicators and found in most regions of Canada!



WILD STRAWBERRY

Scientific name: (*Fragaria virginiana/vesca*)
French name: fraiser sauvage
Bloom time: April to May

Habitat: forest, meadows, open areas

Location: YK, NT, BC, AB, SK, MB, ON, QC, NB, NS, PEI, NF

Description: Small plant that grows in woods or fields, often forming little colonies. Each plant has three-to-five white flowers, 7–10 mm long and each has five petals. Fruits look like miniatures of store-bought strawberries.

What to watch for:
 When do the first flowers open in the observed plants?
 When are 50% of the flowers open in the observed plants?

DANDELION

Scientific name: (*Taraxacum officinale*)
French name: pissenlit
Bloom time: April to June

Habitat: Dandelions grow almost anywhere, but are common in cultivated areas and wastelands.

Location: YK, NT, BC, AB, SK, MB, ON, QC, NB, NS, PEI, NF

Description: Common plant, 5-40 cm tall, introduced to Canada from Europe. Flower heads are yellow and the flower stem is hollow and leafless. After full bloom, white, fluffy, round balls of seeds appear. The parachuted seeds are blown away by the wind.

What to watch for:
 When do first flowers open in the observed plants?
 When does the first seed-head open, forming a white, fluffy ball of seeds?

COMMON PURPLE LILAC

Scientific Name: (*Syringa vulgaris*)
French name: lilas commun
Bloom time: May to June

Habitat: Lilac bushes grow where they have been planted, such as in parks and gardens; but this introduced plant does not grow successfully in the arctic.

Location: YK, NT, BC, AB, SK, MB, ON, QC, NB, NS, PEI, NF

Description: A non-native garden shrub, brought to Canada from Europe, it can grow up to 4 m high and 7 m wide. Heart-shaped leaves are smooth and appear before the flowers bloom. Small fragrant flowers (florets) grow in clusters 10–20 cm long, and can vary in colour.

What to watch for:
 When are the first florets open on the observed shrub (3 places)?
 When are 50% of the florets open on the observed shrub?
 When do the first leaves push out of the bud and unfold completely?

Do You Know Canada's Floral Emblems?

Here is a list of the official provincial flower emblems of the provinces and territories of Canada. Each of these flowers is native to Canada, and grows wild in at least part of the province or territory it represents.

Alberta	wild rose
British Columbia	pacific dogwood
Manitoba	prairie crocus
New Brunswick	purple violet
Newfoundland	pitcher plant
Northwest territories	mountain avens
Nunavut	purple saxifrage
Nova Scotia	mayflower
Ontario	trillium
Prince Edward island	pink lady's slipper
Quebec	blue flag
Saskatchewan	western red lily
Yukon	fireweed

